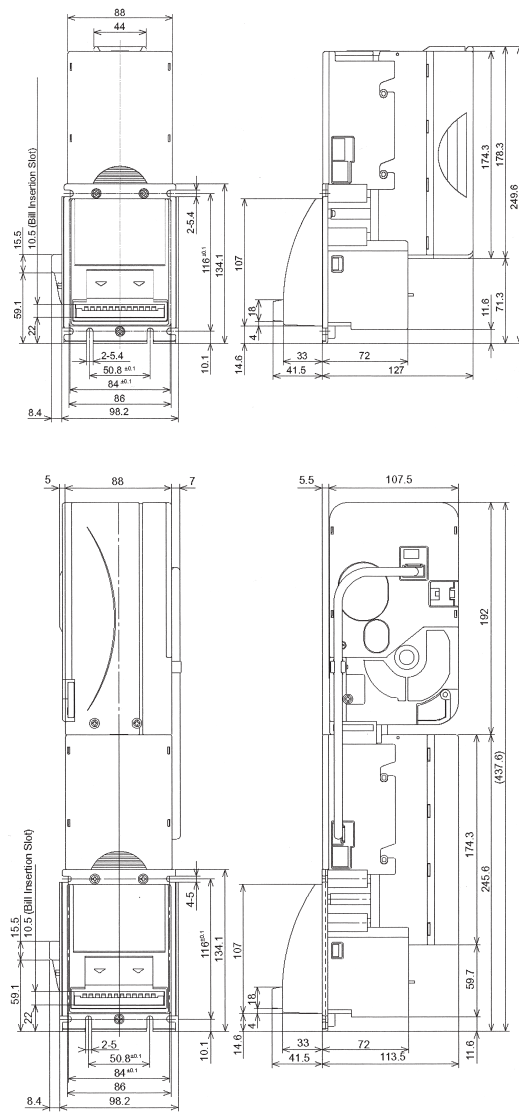


DBV-300 SERIES

SPECIFICATIONS:



All references in mm

JAPAN CASH/MACHINE

HEAD OFFICE, JAPAN:
2-3-15 Nishiwaki, Hirano-ku, Osaka 547-0035
Tel.: +81 06 6703 8400 Fax: +81 06 6707 0348
Internet: www.jcm-hq.co.jp

EUROPE:
Mündelheimer Weg 60, 40472 Düsseldorf, Germany
Tel.: +49 211 530 6450 Fax: +49 211 5306 4565
Internet: www.jcm-europe.com

UNITED KINGDOM:
Unit B, Third Avenue, Denbigh West Business Park,
Bletchley, Milton Keynes, MK1 1EJ
Tel.: +44 870 770 2863 Fax: +44 190 837 7834
Internet: www.jcm-uk.com

USA:
925 Pilot Road Las Vegas, Nevada 89119
Tel: +1702 651 0000 Fax: +1702 651 0003
Internet: www.jcm-american.com

HONGKONG, CHINA:
Unit 1-7, 3F, Favor Industrial Center, 2-6 Kin Hong St., Kwai
Chung N.T., Hongkong
Tel. +852 2429 7187 Fax: +852 2420 8864
Internet: www.jcmgold.com.hk

JCM reserves the right to change product specifications without notice.

INSERTION

Lengthwise: Width 62–72mm
Length 120–160mm

ACCEPTANCE RATE

95% or higher

PROCESSING SPEED

Approx. 2 sec

CASHBOX

back access

CASHBOX CAPACITY

200, 300 or 1000

ESCROW

1 Banknote

INTERFACE

MDB, TTL, RS232, Photo Coupler, Pulse

PROTOCOL

MDB, Serial, Pulse

VALIDATION METHOD

Optical (transparency, reflection) and magnetic

BARCODE READING

Yes (future option)

STATUS LEDs

3 Display LEDs

DIMENSION WxDxH (in mm)

200 cashbox: 106.6 x 155 x 245.6
300 cashbox: 106.6 x 168.5 x 249.6
1000 cashbox: 106.6 x 291.5 x 249.6

WEIGHT

Approx. 1.2 kg

INSTALLATION

Stacker Up (SU) or Stacker Down (SD)
Indoor and Outdoor

ENVIRONMENT

Operating temperature: -15°C ~ +60°C
Storage temperature: -20°C ~ +60°C
Humidity: 15-95% RH (no condensation)

POWER SPECIFICATIONS

DC 24V (±5%) DC 12V (optional)
Standby: 0.2A 0.3A
Operating: 0.4A 0.6A

OPTIONAL

Handheld support for software updates,
test and accounting functions

MAINTENANCE

Easy access through modular design

APPROVALS

CE/UL/CSA

RC-10 RECYCLING UNIT

Dimension (W x D x H in mm):
104.5 x 155 x 426.0
Weight: Approx. 2.1 kg
Recycling Capacity: max. 11 banknotes
Denominations: 1
Processing Speed: Approx. 4 sec

DBV-300 SERIES



Security. Technology. Solutions.



DBV-300 SERIES

THE WORLD'S BANKNOTE HANDLING SOLUTION

WHO IS JCM?

- ONE OF THE LARGEST BILL ACCEPTOR SUPPLIERS
- INTRODUCED BILL ACCEPTORS TO THE GAMING INDUSTRY IN 1985
- MANUFACTURER AND DISTRIBUTOR OF CASH HANDLING EQUIPMENT INCLUDING THE WBA™, WORLD BILL ACCEPTOR, WIDELY RECOGNIZED AS AN INDUSTRY STANDARD
- JCM HEADQUARTERS ARE BASED IN JAPAN
- SUBSIDIARIES LOCATED IN DÜSSELDORF, GERMANY, MILTON KEYNES, UNITED KINGDOM, HONGKONG, CHINA, WITH SALES OFFICE IN MACAU, LAS VEGAS, USA, WITH SALES OFFICES IN ILLINOIS, NEW JERSEY, MISSISSIPPI AND SYDNEY, AUSTRALIA
- JCM SERVICE CENTRES IN BELGIUM, BULGARIA, CROATIA, CZ REPUBLIC, ESTONIA, HUNGARY, IRELAND, ITALY, KAZAKHSTAN, LATVIA, LITHUANIA, MALTA, NORWAY, POLAND, ROMANIA, RUSSIA, SERBIA, SOUTH-AFRICA, SPAIN, SWEDEN, UKRAINE AND UNITED ARAB EMIRATES



Revolutionary banknote recycling unit RC-10



Optional cashbox for 1000 banknotes



SECURITY

High quality reflection and transmission sensors ensure an optimum security against counterfeits. All sensors are integrated in the back side of the acceptor to protect them from environmental impacts.

Optional Snack Mask



TECHNOLOGY

The DBV supports the use of handhelds: software updates, accounting overviews, statistics and service function tests can be done in the field.

Security. Technology. Solutions.
With DBV you take the flexible way.

SOLUTIONS

The combination of DBV and recycling unit enables a machine to accept and return banknotes. Thanks to its modular design the DBV is suitable for many different applications.

CONTACT JCM TODAY!

EUROPE: +49 211 530 6450

USA: +1 702 651 0000

UK: +44 870 770 2863

HK: +852 2429 7187

